



PRINCE Dr. K. VASUDEVAN COLLEGE OF ENGINEERING AND TECHNOLOGY

(Approved by AICTE, Affiliated to Anna University & ISO 9001:2015 Certified Institution)
Medavakkam-Mambakkam Main Road, Ponmar, Chennai-600127

EMPLOYER FEEDBACK ANALYSIS REPORT

FEEDBACK ON ACADEMIC PERFORMANCE AND ITS ENRICHMENT / AMBIENCE OF THE INSTITUTION

DEPARTMENT OF COMPUTER SCIENCE AND ENGINEERING

ACADEMIC YEAR: 2017-2018

RESPONDENTS: 6

1 - far from satisfied, 2 - not satisfied, 3 - satisfied, 4 - happy, 5 - very happy

S.NO	ATTRIBUTES ON ACADEMIC PERFORMANCE	1	2	3	4	5
1.	General communication skills	0	0	0	2	4
2.	Developing practical solutions to workplace problems	0	1	1	2	2
3.	Working as part of a team	0	0	1	1	4
4.	Creative in response to workplace challenges	0	0	0	1	5
5.	Self-motivated and taking on appropriate level of responsibility	0	0	1	2	3
6.	Open to new ideas and learning new techniques	0	0	1	1	4
7.	Using technology and workplace equipment	0	1	1	1	3
8.	Ability to contribute to the goal of the organization	0	0	0	2	4
9.	Technical knowledge/skill	0	0	1	2	3
10.	Ability to manage/leadership qualities	0	1	1	2	2
11.	Innovativeness, creativity	0	1	1	1	3
12.	Relationship with seniors/peers/subordinates	0	0	0	2	4
13.	Involvement in social activities	0	0	1	2	3
14.	Ability to take up extra responsibility	0	1	0	2	3
15.	Obligation to work beyond schedule if required	0	1	1	2	2

PRINCIPAL
PRINCE Dr. K. VASUDEVAN COLLEGE
OF ENGINEERING AND TECHNOLOGY
PONMAR, CHENNAI-600127



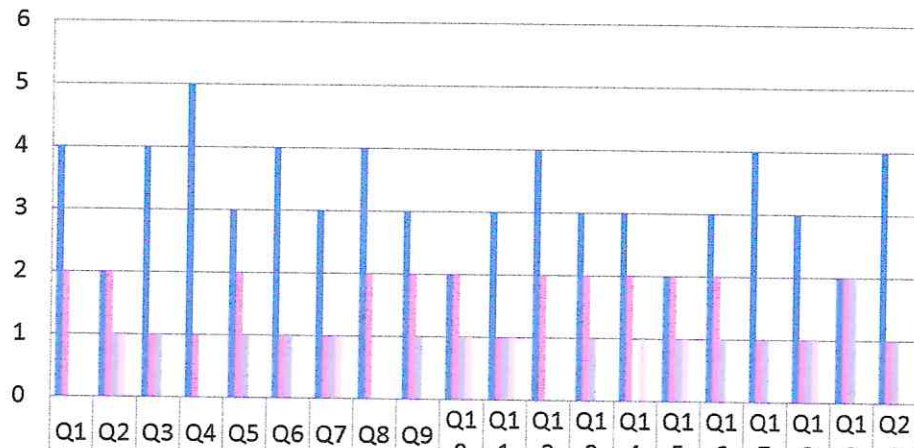
PRINCE Dr. K. VASUDEVAN COLLEGE OF ENGINEERING AND TECHNOLOGY

(Approved by AICTE, Affiliated to Anna University & ISO 9001:2015 Certified Institution)
Medavakkam-Mambakkam Main Road, Ponmar, Chennai-600127

S.NO	ATTRIBUTES ON AMBIENCE	1	2	3	4	5
16.	Learning Ambiance	0	0	1	2	3
17.	Functioning of Placement Cell	0	0	1	1	4
18.	Research Lab facilities	0	1	1	1	3
19.	Infrastructure to organize "Pool Campus"	0	0	2	2	2
20.	WIFI with adequate Bandwidth	0	0	1	1	4

EMPLOYER FEEDBACK REPORT 2017 -2018 [CSE]

RESPONDENTS - 6



Strongly Agree (5)	4	2	4	5	3	4	3	4	3	2	3	4	3	3	2	3	4	3	2	4
Agree (4)	2	2	1	1	2	1	1	2	2	2	1	2	2	2	2	2	1	1	2	1
Neutral (3)	0	1	1	0	1	1	1	0	1	1	1	0	1	0	1	1	1	1	2	1
Disagree (2)	0	1	0	0	0	0	1	0	0	1	1	0	0	1	1	0	0	1	0	0
Strongly Disagree (1)	0	0	0	0	0	0	0	0	0	0	0	0	0	0	0	0	0	0	0	0

PRINCIPAL
PRINCE Dr. K. VASUDEVAN COLLEGE
OF ENGINEERING AND TECHNOLOGY
PONMAR, CHENNAI-600127



PRINCE Dr. K. VASUDEVAN COLLEGE OF ENGINEERING AND TECHNOLOGY

(Approved by AICTE, Affiliated to Anna University & ISO 9001:2015 Certified Institution)
Medavakkam-Mambakkam Main Road, Ponmar, Chennai-600127

EMPLOYER FEEDBACK ANALYSIS REPORT

FEEDBACK ON ACADEMIC PERFORMANCE AND ITS ENRICHMENT / AMBIENCE OF THE INSTITUTION

DEPARTMENT OF ELECTRONICS AND COMMUNICATION ENGINEERING

ACADEMIC YEAR: 2017-2018

RESPONDENTS: 4

1 - far from satisfied, 2 - not satisfied, 3 - satisfied, 4 - happy, 5 - very happy						
S.NO	ATTRIBUTES ON ACADEMIC PERFORMANCE	1	2	3	4	5
1.	General communication skills	0	0	1	1	2
2.	Developing practical solutions to workplace problems	0	1	1	1	1
3.	Working as part of a team	0	0	1	1	2
4.	Creative in response to workplace challenges	0	0	1	1	2
5.	Self-motivated and taking on appropriate level of responsibility	0	0	0	1	3
6.	Open to new ideas and learning new techniques	0	0	1	2	1
7.	Using technology and workplace equipment	0	0	1	1	2
8.	Ability to contribute to the goal of the organization	0	0	0	1	3
9.	Technical knowledge/skill	0	1	1	1	1
10.	Ability to manage/leadership qualities	0	0	1	1	2
11.	Innovativeness, creativity	0	1	1	1	1
12.	Relationship with seniors/peers/subordinates	0	0	1	1	2
13.	Involvement in social activities	0	1	1	1	1
14.	Ability to take up extra responsibility	0	0	0	2	2
15.	Obligation to work beyond schedule if required	0	1	1	1	1

PRINCIPAL

PRINCE Dr. K. VASUDEVAN COLLEGE
OF ENGINEERING AND TECHNOLOGY
PONMAR, CHENNAI-600127



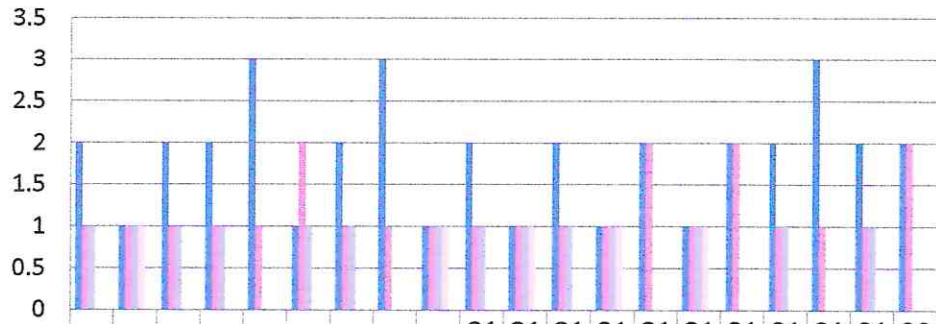
PRINCE Dr. K. VASUDEVAN COLLEGE OF ENGINEERING AND TECHNOLOGY

(Approved by AICTE, Affiliated to Anna University & ISO 9001:2015 Certified Institution)
Medavakkam-Mambakkam Main Road, Ponmar, Chennai-600127

S.NO	ATTRIBUTES ON AMBIENCE	1	2	3	4	5
16.	Learning Ambiance	0	0	0	2	2
17.	Functioning of Placement Cell	0	0	1	1	2
18.	Research Lab facilities	0	0	0	1	3
19.	Infrastructure to organize "Pool Campus"	0	0	1	1	2
20.	WIFI with adequate Bandwidth	0	0	0	2	2

EMPLOYER FEEDBACK REPORT 2017 -2018 [ECE]

RESPONDENTS - 4



	Q1	Q2	Q3	Q4	Q5	Q6	Q7	Q8	Q9	Q1 0	Q1 1	Q1 2	Q1 3	Q1 4	Q1 5	Q1 6	Q1 7	Q1 8	Q1 9	Q2 0
Strongly Agree (5)	2	1	2	2	3	1	2	3	1	2	1	2	1	2	1	2	2	3	2	2
Agree (4)	1	1	1	1	1	2	1	1	1	1	1	1	1	2	1	2	1	1	1	2
Neutral (3)	1	1	1	1	0	1	1	0	1	1	1	1	1	0	1	0	1	0	1	0
Disagree (2)	0	1	0	0	0	0	0	0	1	0	1	0	1	0	1	0	0	0	0	0
Strongly Disagree (1)	0	0	0	0	0	0	0	0	0	0	0	0	0	0	0	0	0	0	0	0

PRINCIPAL
PRINCE Dr. K. VASUDEVAN COLLEGE
OF ENGINEERING AND TECHNOLOGY
PONMAR, CHENNAI-600127



PRINCE Dr. K. VASUDEVAN COLLEGE OF ENGINEERING AND TECHNOLOGY

(Approved by AICTE, Affiliated to Anna University & ISO 9001:2015 Certified Institution)
Medavakkam-Mambakkam Main Road, Ponmar, Chennai-600127

EMPLOYER FEEDBACK ANALYSIS REPORT

FEEDBACK ON ACADEMIC PERFORMANCE AND ITS ENRICHMENT / AMBIENCE OF THE INSTITUTION

DEPARTMENT OF ELECTRICAL AND ELECTRONICS ENGINEERING

ACADEMIC YEAR: 2017-2018

RESPONDENTS: 6

1 - far from satisfied, 2 - not satisfied, 3 - satisfied, 4 - happy, 5 - very happy

S.NO	ATTRIBUTES ON ACADEMIC PERFORMANCE	1	2	3	4	5
1.	General communication skills	0	0	0	1	3
2.	Developing practical solutions to workplace problems	0	0	1	2	1
3.	Working as part of a team	0	0	1	1	2
4.	Creative in response to workplace challenges	0	0	0	1	3
5.	Self-motivated and taking on appropriate level of responsibility	0	0	0	1	3
6.	Open to new ideas and learning new techniques	0	0	1	2	1
7.	Using technology and workplace equipment	0	0	1	1	2
8.	Ability to contribute to the goal of the organization	0	0	0	1	3
9.	Technical knowledge/skill	0	1	1	1	1
10.	Ability to manage/leadership qualities	0	0	0	2	2
11.	Innovativeness, creativity	0	1	1	1	1
12.	Relationship with seniors/peers/subordinates	0	0	0	2	2
13.	Involvement in social activities	0	0	1	1	2
14.	Ability to take up extra responsibility	0	0	0	2	2
15.	Obligation to work beyond schedule if required	0	1	1	1	1


PRINCIPAL

PRINCE Dr. K. VASUDEVAN COLLEGE
OF ENGINEERING AND TECHNOLOGY
PONMAR, CHENNAI-600127



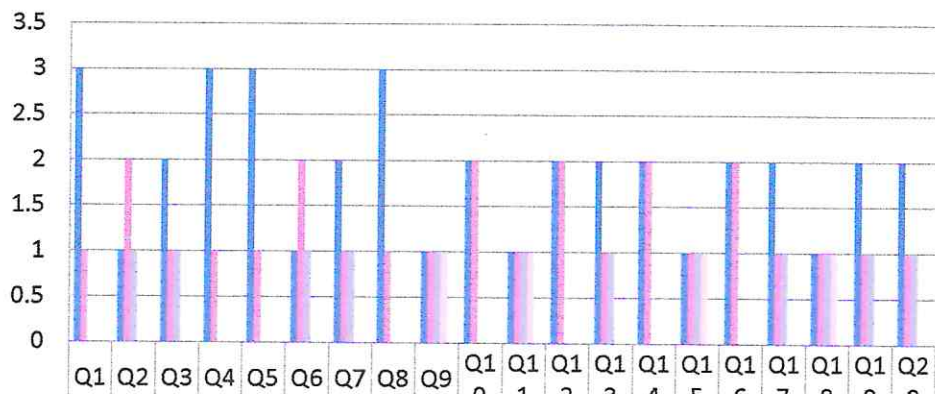
PRINCE Dr. K. VASUDEVAN COLLEGE OF ENGINEERING AND TECHNOLOGY

(Approved by AICTE, Affiliated to Anna University & ISO 9001:2015 Certified Institution)
Medavakkam-Mambakkam Main Road, Ponmar, Chennai-600127

S.NO	ATTRIBUTES ON AMBIENCE	1	2	3	4	5
16.	Learning Ambiance	0	0	0	2	2
17.	Functioning of Placement Cell	0	0	1	1	2
18.	Research Lab facilities	0	1	1	1	1
19.	Infrastructure to organize "Pool Campus"	0	0	1	1	2
20.	WIFI with adequate Bandwidth	0	0	1	1	2

EMPLOYER FEEDBACK 2017-2018 [EEE]

RESPONDENTS - 4



Strongly Agree (5)	3	1	2	3	3	1	2	3	1	2	1	2	2	2	1	2	2	1	2	2
Agree (4)	1	2	1	1	1	2	1	1	1	2	1	2	1	2	1	2	1	1	1	1
Neutral (3)	0	1	1	0	0	1	1	0	1	0	1	0	1	0	1	0	1	1	1	1
Disagree (2)	0	0	0	0	0	0	0	0	1	0	1	0	0	0	1	0	0	1	0	0
Strongly Disagree (1)	0	0	0	0	0	0	0	0	0	0	0	0	0	0	0	0	0	0	0	0

PRINCIPAL
PRINCE Dr. K. VASUDEVAN COLLEGE
OF ENGINEERING AND TECHNOLOGY
PONMAR, CHENNAI-600127



PRINCE Dr. K.VASUDEVAN COLLEGE OF ENGINEERING AND TECHNOLOGY

(Approved by AICTE, Affiliated to Anna University & ISO 9001:2015 Certified Institution)
Medavakkam-Mambakkam Main Road, Ponmar, Chennai-600127

EMPLOYER FEEDBACK ANALYSIS REPORT

FEEDBACK ON ACADEMIC PERFORMANCE AND ITS ENRICHMENT / AMBIENCE OF THE INSTITUTION

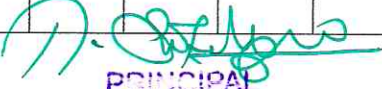
DEPARTMENT OF MECHANICAL ENGINEERING

ACADEMIC YEAR: 2017-2018

RESPONDENTS: 4

1 - far from satisfied, 2 - not satisfied, 3 - satisfied, 4 - happy, 5 - very happy

S.NO	ATTRIBUTES ON ACADEMIC PERFORMANCE	1	2	3	4	5
1.	General communication skills	0	0	0	1	3
2.	Developing practical solutions to workplace problems	0	0	1	1	2
3.	Working as part of a team	0	0	0	1	3
4.	Creative in response to workplace challenges	0	0	0	1	3
5.	Self-motivated and taking on appropriate level of responsibility	0	0	0	1	3
6.	Open to new ideas and learning new techniques	0	0	1	1	2
7.	Using technology and workplace equipment	0	0	0	1	3
8.	Ability to contribute to the goal of the organization	0	0	1	1	2
9.	Technical knowledge/skill	0	0	0	1	3
10.	Ability to manage/leadership qualities	0	0	1	1	2
11.	Innovativeness, creativity	0	0	0	1	3
12.	Relationship with seniors/peers/subordinates	0	0	0	1	3
13.	Involvement in social activities	0	0	0	1	3
14.	Ability to take up extra responsibility	0	0	1	1	2
15.	Obligation to work beyond schedule if required	0	0	1	1	2


PRINCIPAL

PRINCE Dr. K. VASUDEVAN COLLEGE
OF ENGINEERING AND TECHNOLOGY
PONMAR, CHENNAI-600127

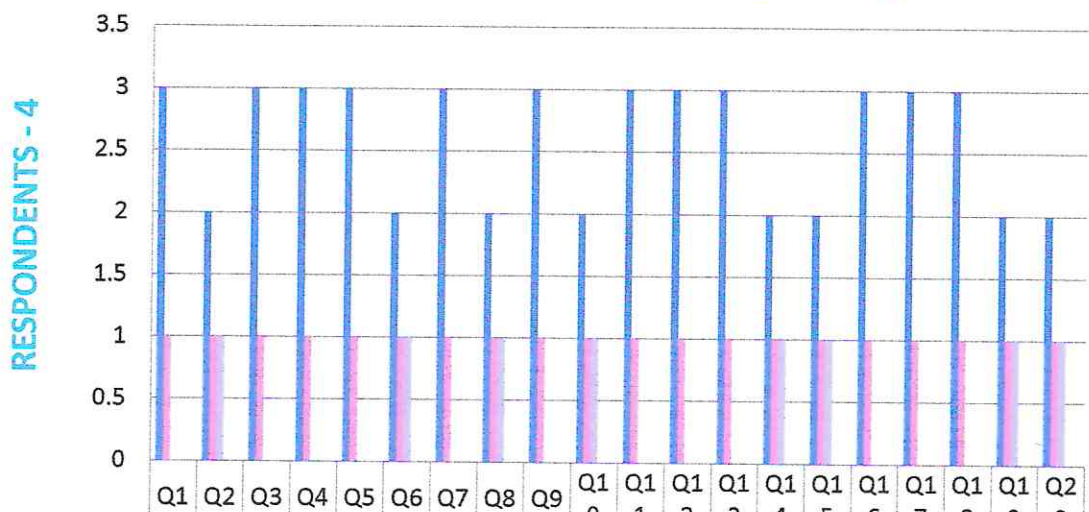


PRINCE Dr. K. VASUDEVAN COLLEGE OF ENGINEERING AND TECHNOLOGY

(Approved by AICTE, Affiliated to Anna University & ISO 9001:2015 Certified Institution)
Medavakkam-Mambakkam Main Road, Ponmar, Chennai-600127

S.NO	ATTRIBUTES ON AMBIENCE	1	2	3	4	5
16.	Learning Ambiance	0	0	0	1	3
17.	Functioning of Placement Cell	0	0	0	1	3
18.	Research Lab facilities	0	0	0	1	3
19.	Infrastructure to organize "Pool Campus"	0	0	1	1	2
20.	WIFI with adequate Bandwidth	0	0	1	1	2

EMPLOYER FEEDBACK 2017 - 2018 [MECH]



	Q1	Q2	Q3	Q4	Q5	Q6	Q7	Q8	Q9	Q10	Q11	Q12	Q13	Q14	Q15	Q16	Q17	Q18	Q19	Q20
Strongly Agree (5)	3	2	3	3	3	2	3	2	3	2	3	3	3	2	2	3	3	3	2	2
Agree (4)	1	1	1	1	1	1	1	1	1	1	1	1	1	1	1	1	1	1	1	1
Neutral (3)	0	1	0	0	0	1	0	1	0	1	0	0	0	1	1	0	0	0	1	1
Disagree (2)	0	0	0	0	0	0	0	0	0	0	0	0	0	0	0	0	0	0	0	0
Strongly Disagree (1)	0	0	0	0	0	0	0	0	0	0	0	0	0	0	0	0	0	0	0	0

(Signature)
PRINCIPAL

PRINCE Dr. K. VASUDEVAN COLLEGE
OF ENGINEERING AND TECHNOLOGY
PONMAR, CHENNAI-600127